

# Valley® Product Catalog

RELIABLE | DURABLE | PRECISE | ADVANCED | RESPONSIVE



**VALLEY** 

The Leader in Precision Irrigation

## Table of Contents

Center Pivots . . . . .	4
Towable Options . . . . .	8
Linears . . . . .	10
Corners, Benders, DropSpan . . . . .	12
Reliable Drive Train . . . . .	14
Durable Structure . . . . .	16
Control Panel Options . . . . .	18
Advanced Control Technology . . . . .	20
Precise Water Application . . . . .	22
Corrosion Solutions . . . . .	24
Floatation Solutions . . . . .	25
Water Management . . . . .	26



# Why Choose Valley®?

The Valley brand leads the world in precision irrigation and is the founder of the industry

## **Valley® Center Pivots, Corners, and Linears:**

- Chosen 2-to-1 over competitor brands – 50% of center pivots in use today are Valley pivots
- Powered by the strongest gearbox – the only irrigation gearbox Made in the USA
- Provide the lowest total cost of ownership
- Demand a higher resale value than competitive machines
- Backed by the most knowledgeable dealers in the industry

Valley offers not only the best machine but also the most innovative technology

## **Valley Irrigation Technology:**

- Offers the most advanced control and monitoring tools for irrigation equipment
- Designed for a variety of mobile devices
- Includes BaseStation3®, an industry exclusive that provides unprecedented farm control – anytime, anywhere

Valley has the most extensive dealer network and the most responsive, factory-trained technicians

## **Valley Irrigation Dealers:**

- Undergo extensive product training
- Provide fast, reliable service
- Know irrigation and local agricultural practices



**SCAN**

this code to see Valley equipment in action

**Need a QR code reader?** Download one for free from your phone's app marketplace.



# 8000 series Center Pivot



The top-of-the-line, Valley 8000 series is engineered for long, durable life and field-tested to handle the most demanding terrain and toughest operating stresses. Take advantage of the benefits this machine offers such as the longest span in the industry and bender and corner options to ensure maximum field coverage.

Valley developed a standard, accelerated life cycle test based on past field performance for Valley and competitive spans so you can see how they match up. The test subjects the spans to conditions experienced on rough ground with large tires. The span with the longest cycle test life can be expected to last the longest in similar field conditions.

The test results were certified by an independent, professional engineering consultant and prove Valley spans on average last five to six times longer than our closest competitors' spans.

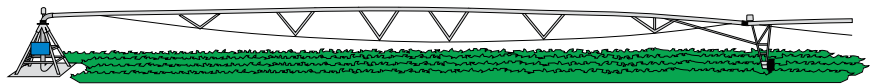
### 8000 series Specifications

- 6 5/8", 8 5/8", or 10" pivot point options
- 6", 6 5/8", 8 5/8", and 10" pipe diameter options
- 2, 5, or 7.5 HP booster pump
- Maximum machine length of 24 spans covering 2,800'
- Span lengths of 115' to 225'

## Structure Options for Different Crop Heights

### Standard Profile Drive Units

- Clearance: 9' 4" to 10' 0"



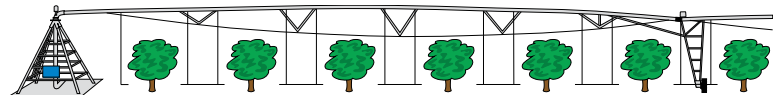
### Low-Profile Drive Units

- When standard clearances are not required
- Low-Profile clearance: 6' 2" to 6' 5"

\*Actual clearances in the field will vary based on wheel track depths, tire size, span lengths, field terrain, and various operating conditions.

### High-Profile and Ultra-High Profile Drive Units

- Provide increased crop clearance
- High-Profile clearance: 13' 0" to 13' 3"
- Ultra-High Profile clearance: 16' 3" to 16' 6"



## Single Span Spinner™ Drive

The Valley Single Span Spinner™ Drive is designed for growers with small fields or limited access to electricity. This single span pivot is driven by water pressure and offers all of the structural and mechanical advantages of any Valley center pivot.



## Single Span Engine Drive

The Valley Single Span Engine Drive is ideal for irrigating small fields, up to 6 acres, where electric power is not readily available. All sprinkler packages are available to deliver efficient water applications with low water pressure, providing significant energy, labor, and water savings.





# 7000 series Center Pivot

Engineered and developed as a cost-effective irrigation solution for growers looking for choices, the Valley 7000 series is second only to the industry-leading Valley 8000 series in reliability, durability, and overall performance.

## 7000 series Specifications

- 6 5/8" or 8 5/8" pivot point options
- 6" and 6 5/8" pipe diameter options
- 2 or 5 HP booster pump
- Maximum machine length of 1,500'
- Standard and low profile
- Span lengths from 11' to 205'





## 5000 series Center Pivot

The Valley 5000 series center pivot provides a cost-effective irrigation solution for smaller fields, up to 60 acres. Created specifically for production agriculture, this durable machine comes with the reliability and aftermarket support that only Valley dealers can provide. The Classic control panel is available for the 5000 series basic operations.

### **5000 series specifications:**

- 5" diameter pipeline
- 820' maximum machine length
- 108" outlet spacing
- 112.5' to 202.5' span lengths
- Single-phase power option



# Towable Pivots

Valley towable pivots provide another option for irrigating smaller production ag fields. Available for the 8000 series and the 5000 series, these machines allow you to irrigate multiple fields with just one pivot. Each pivot can be towed from one field to another in less than an hour. Towable options include: 4-Wheel E-Z Tow™, 2-Wheel E-Z Tow, and Skid Pivot.

## 4-Wheel E-Z Tow™

- Handles a wide range of field sizes
- Fixed wheels standard
- Optional pivoting wheels easily rotate to tow in any direction

## 2-Wheel E-Z Tow

- Ideal for part-circle fields or multi-directional towing
- Allows for up to five spans
- Comes standard with tongue hitch design

## Skid Pivot

- Low cost option best used for infrequent towing
- Designed for any size towable unit
- Available on 8000 series





## Valley Towable Gearbox

### Features

- High-strength steel pin with long reinforced drive arm and reinforced receiver provides reliable, durable, and long-lasting drive connection between gearbox and wheel
- Bale-type pin retainer design keeps pin in place even in the most difficult field situations and is easy to release when it's time to tow
- Includes all of the features and benefits of the patented, Made in the USA Valley gearbox.
- Tooth Design – industry-exclusive , 25° tooth angle provides longer life and better reliability in tough conditions
- 52:1 gear ratio – full recessed tooth design keeps oil between engaged gears
- Ductile iron worm gear provides greater load capacity and wear resistance
- American made, case-hardened input/output bearings

### Valley Towable Hubs

- Grease filled input/output bearings for long life and reliability
- Features heavy duty castings



## Towable Omni Gearbox

### Features

- Tooth Design - 20° tooth angle provides long life and reliability in tough conditions
- 52:1 gear ratio – full recessed tooth design keeps oil between engaged gears
- Ductile iron worm gear provides greater load capacity and wear resistance than the competition
- Chinese through-hardened input/output bearings

### Disengaging Worm Mechanism

- Single-piece, precision-machined worm gear carrier ensures accurate alignment between worm and bull gear
- Specialized sealing plate design on input shaft greatly reduces chance of leakage
- Simple lever makes for quick and easy release when it's time to tow



# Valley Linears



Valley Rainger Swing-Around™



## Valley Rainger™

Based on a common cart platform, the Valley Rainger™ provides versatility by taking water from a ditch or a hose. The cart can be customized for your field by adding options such as chemigation and fertigation tanks.

## Valley Rainger Swing-Around™

The Ranger Swing-Around™ rotates 180° around the cart to irrigate the opposite side of the field. It allows you to double the amount of land irrigated with one machine, saving you time and money.



## Valley Universal

Unlike other swing-around linears, the Valley Universal can automatically switch between linear mode and pivot mode. Available as a hose drag or ditch feed, the Universal frees up time for other work.



## Valley Two Wheel Hose Feed

The Two Wheel Hose Feed Linear from Valley is an ideal conversion option for fields currently irrigated by flood, drip, or solid set. This versatile machine can operate as a standard linear, towable, or swing-around.



## Valley Two Wheel Ditch Feed

The Valley Two Wheel Ditch Feed Linear can use either permanent earthen water delivery infrastructures or earthen ditches that are installed annually. A flexible suction inlet fits nearly any functioning earthen ditch, keeping investment costs low. Ideal for small fields, this linear can be towed or swung around to cover more area.



# Gain Additional Acres

With Valley Corners, Benders, and DropSpan™, you can pick up extra acres and earn extra income from land you already own. Combine these solutions – by mixing and matching multiple options – on one machine to truly customize a pivot that maximizes your irrigated acres.

## VFlex™ Corner

The VFlex™ Corner replaces the legacy Valley Corner, creating a new, durable machine that uses the most modern structural components while retaining simple start-stop controls. The VFlex Corner offers more features and options than any non-Valley corner on the market today and is completely customizable to meet your needs.



## Valley Precision Corner®

The Precision Corner® is our patented, computerized option for those of you who want precision in your water, chemical, and fertilizer application. The Precision Corner is available with our patented Water Utilization Package™ that allows you to extend faster and irrigate additional acres.



# Valley Benders

A Valley Bender is an option added to your center pivot that basically “wraps” it around whatever is in its way: the outer portion of your pivot continues moving while the inner portion is stopped by fences, trees, or other obstacles. An exclusive speed-up timer increases the speed of the center pivot to reduce over watering while bending.

## Bender30™

- Bends up to 30 degrees in either direction
- Uses existing structural components – easy to retrofit
- Multiple Bender30™ units can be installed on one pivot



## Bender160™

- Bends up to 160 degrees in either direction
- Uses custom structural components
- Multiple Bender160™ units can be installed on one pivot



## Valley DropSpan™

With the Valley DropSpan™, you can drop the outer spans of your center pivot or linear, so the rest of your machine can irrigate acres behind barriers. The spans can be dropped and reattached by one person without tools in less than 15 minutes.

- Simple electrical connector manages span cable and control logic; no rewiring needed
- Simple winch and batten leg system to drop and reattach outer spans
- Stop switch automatically aligns base machine with dropped spans for easy reattachment

# Reliable Drive Train

## Valley Gearbox

The patented Valley gearbox is designed and manufactured in Valley, NE, USA. It is the most durable gearbox in the irrigation industry and is built to work under today's most demanding conditions.

- 1. Large capacity rubber diaphragm** – expands with heat and pressure to minimize water condensation.
- 2. Input and output bearings** – American made and case hardened to provide the highest quality and load rating available in the industry.
- 3. Worm gear** – high-strength ductile iron provides significantly longer wear life than steel when combined with cast iron bull gear.
- 4. Tooth design** – industry exclusive 25° tooth angle provides 40% longer life and better reliability in tough conditions compared to normal 14.5° tooth designs.
- 5. Largest bull gear neck and keyway** – for extra strength in critical load-bearing area.



- 6. Expansion chamber** – cap made of corrosion-resistant cast aluminum; rubber diaphragm allows oil to expand and contract during operation. Vented cap prevents pressure buildup and prevents seal from leaking.
- 7. Threaded endcap** – allows accurate bearing preload to increase bearing life.
- 8. 52:1 gear ratio** – full recessed tooth design keeps oil between engaged gears.
- 9. Bull gear** – high-strength cast iron provides highest load capacity in the industry and longest life. Optional bronze gear is available for extreme conditions.
- 10. Multi-viscosity gearbox oil** – exceeds 85w140 GL5 oil for long gear wear under extreme load conditions.
- 11. Longest output shaft (steel)** – exclusive to Valley gearboxes. Provides extra clearance between gearbox and wheel flange to reduce mud buildup, which reduces seal damage and extends gearbox life. Special offset rims position tire back close to the gearbox to minimize bearing loads – another Valley exclusive.





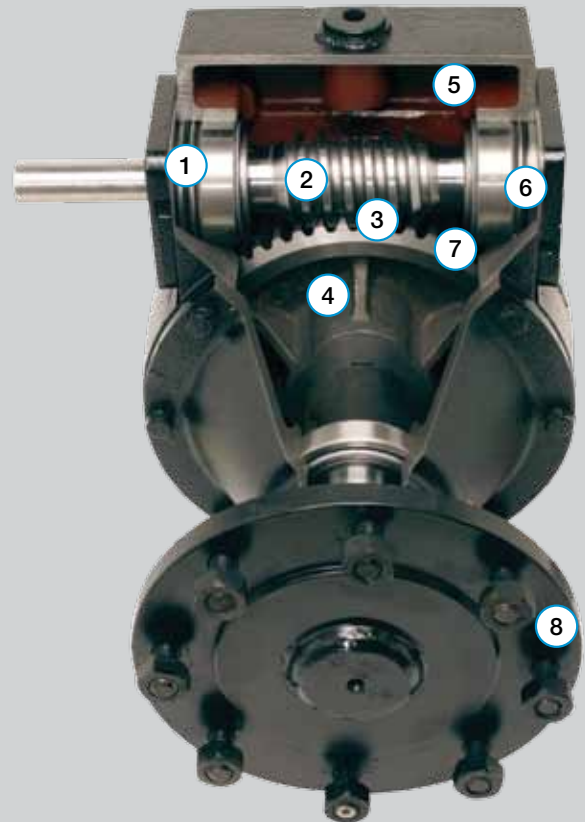


## Center Drive\*

The Valley center drive is built stronger, lasts longer, and uses less energy than other irrigation drive motors. Standard-speed and high-speed motors are available, with the standard-speed requiring the least amount of power in the industry.

- Double output shaft seals — keeps oil in the motor and keeps dirt out.
- Built-in crop guard over U-joint — prevents crop wrapping in or near oil seals.
- Case-hardened steel helical gears — more teeth in mesh at all times for smoother power transmission.
- Exclusive coating — applied to internal surfaces to prevent corrosion.
- Finned aluminum housing — for cool-running efficiency. Operates at temperatures lower than competitive motors.
- Exclusive junction box trapped gasket — ensures a water-tight seal.

1. **Input and output bearings** – Chinese, through-hardened bearings.
2. **Worm gear** – high-strength ductile iron provides significantly longer wear life than steel when combined with cast iron bull gear.
3. **Tooth Design** – 14.5° tooth angle.
4. **Shorter bull gear neck and keyway** – matches non-Valley gearboxes
5. **Expansion chamber** – large open volume to minimize internal pressure changes with temperature changes.
6. **Shims** – used to set bearing preload.
7. **52:1 gear ratio** – full recessed tooth design keeps oil between engaged gears.
8. **Long output shaft** – exclusive to Valley gearboxes. Provides extra clearance between gearbox and wheel flange to reduce mud buildup, which reduces seal damage and extends gearbox life. Special offset rims position tire back close to the gearbox to minimize bearing loads – another Valley exclusive.



## VS-7000 – Center Drive\*

The VS-7000 center drive delivers the performance you have come to expect from Valley, but at a lower price point. The VS-7000 is similar to the original Valley center drive, except it has a corrosion-resistant, painted steel housing.

- Same performance specifications
- Same helical gearbox
- Same amp draw
- Same torque rating

From pivot point to end tower, the entire Valley structure is



\*Not available on the 8000 series. Available in U.S. and Canada only.

engineered, constructed, and field-tested to handle any operating stresses your machine may experience, including rough terrain, furrows, and long spans. Valley machines consistently outperform the competition in safety, durability, and strength, giving producers the most valued products in the industry.

**With these features, there's no question that you have the most durable structure:**

- Hot-dip galvanized steel
- 4-leg drive unit with braces
- Ball-and-socket span hitch
- Heavy, 8-bolt pipe flanges
- Welded sprinkler coupler
- Full wrap-around weldments
- Forged truss rod heads
- Polyurethane flange gaskets
- Evenly loaded spans
- Full-length, properly designed pipe for each span length, no short extender pipes

# Durable Valley Structure

## Valley Spans

When making decisions that may affect your yield and operation, look to Valley to provide the structural strength you need to achieve maximum productivity. Valley spans continually and consistently outperform the competition.

- Pipe diameters of 5", 6", 6 5/8", 8 5/8", and 10"
- Span lengths from 115' to 225'
- Galvanized steel comes standard
- PolySpan® pipeline available for corrosive conditions



## Fixed Pivot Points

Fixed pivot points offer maximum platform durability and are available in three sizes to fit your needs.

### 6 5/8" Pivot Point

- Designed for pivots up to 1,500' or nine spans
- Low and standard profile available

### 10" PivotPoint

- Designed for pivots up to 2,800' long
- Standard and high profile available

### 8 5/8" Pivot Point

- Designed for pivots up to 2,000' long
- Heavy duty option is available for machines up to 2,800'
- Low, standard, and high profile available





# Valley Electrical Components



## Collector Ring

Transfers incoming electric power to the pivot and uses a water-tight seal. Comes standard with stainless steel electrical conduit to ensure years of trouble-free service.



## Span Cable

Span cable options include: 12, 10, and 8 gauge wire for power and 14 gauge wire for control. Standard options include a shielded span cable and color-coded wire for easy service and maintenance.



## Tower Box

Galvanized steel base construction with stainless steel shaft and nylon bearing assembly helps ensure long life.



### 1. Triple Lip Seal and Stainless Nipple

Provide long, leak-free life at low and high operating pressures.

### 2. Lateral and Radial Welds

Spread loads over wide area for maximum durability.

### 3. Truss Rods

Large transition radius and uniform loaded rod heads mean a lower concentration of stress and longer machine life.

### 4. Drive Unit Legs

Four braces on each side ensure stable operation in hilly conditions.

### 5. Wrap-Around Leg Attachment Brackets

Cradle the pipe to create added strength. Heavy-duty gussets eliminate pipeline twist.

### 6. Optimized Span

Offers more machine strength and stability as a result of evenly loaded truss angles and forge-formed truss rods.

### 7. Ball and Socket Hitch

The single-piece, forged steel ball ensures smooth span movement in all directions, minimizing stress on the pipeline for longer machine life.

### 8. Sprinkler Outlet

The welded coupler strengthens the pipeline around the water outlet, minimizes pressure loss, and provides better support for the sprinkler package.

### 9. Gearbox

Longer output shaft and offset rim provide clearance between the gearbox and tire to reduce mud buildup and extend seal life.

# Valley Control Panels



## TouchPro™

The TouchPro™ control panel with touch technology provides you with powerful yet user-friendly control of your center pivots. Designed for easy programming, this panel helps you to make quicker and more confident water management decisions.



## Pro2

The technologically advanced Pro2 is control technology at its best. It comes standard with our exclusive, patent-pending Cruise Control™ feature, which offers automatic speed adjustment of your center pivot to prevent over or under application of chemicals. Also available with Tire Pressure Monitoring System (TPMS) and Variable Rate Irrigation (VRI) Speed Control and Zone Control.



## Select2

The Select2 offers you a combination of easy-to-read digital displays and push-button controls. It has the same field-proven processor technology found in the Pro2 control panel, and its software can be easily upgraded as your operation grows or technology advances. Available with VRI Speed Control.



### AutoPilot Linear

The AutoPilot Linear control panel allows your linear to automatically perform functions that were previously specific to Valley center pivots. The AutoPilot measures the lateral position and direction of travel of the linear, allowing functions to be easily programmed.



### ClassicPlus

The ClassicPlus control panel offers easy-to-operate switches for manual operation and is easily upgradable. This panel can be used with a corner arm or linear, as well as with a standard center pivot.



### Classic

The Classic control panel is available for the lowest initial investment and provides push button, manual operation. It is designed for center pivots only and is ideal for a beginning irrigator.



## Control Panel Upgrades

Bring Valley technology to all your center pivots and linears

- A new control panel helps eliminate electrical shutdowns
- Your minimal investment provides a maximum return in reliability
- Choose from four GPS Ready panels
- Almost all pivot brands can be updated with Valley control panel technology

## Global Positioning System (GPS)

### GPS Guidance

- Eliminates the need for below-ground, above-ground, or furrow guidance options
- Guidance path can be easily reprogrammed with the exclusive Valley mapping tool to match changes in farm practices or field boundaries
- Diverse platform is compatible with John Deere® Starfire RTK corrections and Trimble® RTK correction networks.
- Available for corners and linears



### GPS Position

- This technology allows you to know exactly where your center pivots and linears are all the time.
- Water is applied more efficiently, offering higher yield potential and lower input costs
- Requires a GPS Ready TouchPro, Pro2, Select2, or AutoPilot Linear control panel

# Advanced Control Technology

## Valley BaseStation3™

Valley BaseStation3™ is the most comprehensive, state-of-the-art irrigation management solution available. This innovative technology will give you unprecedented control over your operation. You choose to host the BS3 in the cloud or on a centralized PC, and select cellular, data radio technologies. Access BaseStation3 from a computer, laptop, tablet, or your smartphone – using native iOS (iPhone, iPad) or Android apps – to manage and control all your irrigation equipment, including pivots, linears, pumps, and gensets.

## Irrrometer® WATERMARK® soil moisture sensors

- Report moisture levels within the soil at various depths
- Guide irrigation scheduling to avoid over or under watering your fields
- Use water graph software to deliver more detailed sensor information

SCAN

to watch the  
BaseStation3  
Video



ValleyIrrigation.com



## Valley TrackNET®

No more driving to fields in the middle of the night to check or stop your irrigation equipment. With the Valley TrackNET® family of products, you can remotely communicate with your center pivots and linears via Internet, smartphone, mobile phone, or tablet, significantly decreasing costs and wasted time.



### TrackerLT

- Our most basic control product can be used on most brands of center pivots
- Monitors direction, position, and water pressure (pressure transducer required), and stops pivot
- Variable Rate Irrigation (VRI) Speed Control capable

### TrackerPro

- Designed specifically for Valley Classic, and Valley ClassicPlus control panels
- Monitors machine status, GPS Position, and allows you to control start, stop, end guns, and directional changes remotely
- Can also be installed on many non-Valley control panels
- VRI Speed Control capable

### TrackerSP

- Can be used with the TouchPro, Pro2, and Select2 control panels
- Extensive menu of controls, programmable features, and field diagnostics.
- Monitors most remote features, including application depth, diagnostics, end guns, and field position



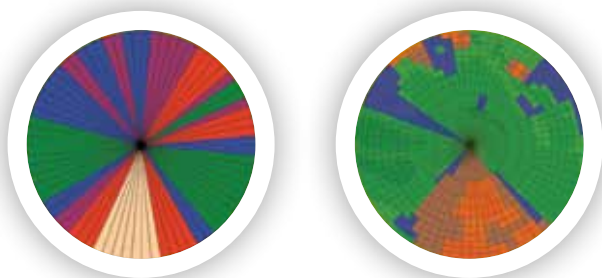
## Valley Tire Pressure Monitoring System (TPMS)

Valley TPMS is the first product in the irrigation industry that monitors tire pressure on a center pivot. TPMS detects slow leaks and sends you an alert identifying the tire that needs attention. This Valley-exclusive technology reduces irrigation down time due to flat tires and prevents tire, rim, and wheel gearbox damage.

# Precise Water Application

## Variable Rate Irrigation (VRI)

Variable Rate Irrigation (VRI) from Valley is ideal for fields with multiple soil types and varying topography. With a combination of hardware and software, Valley VRI allows you to adjust the water application depth to optimize every acre and maximize yield potential. Because Valley understands all fields are different, we offer two VRI options: Speed Control and Zone Control.



SCAN

to watch the  
VRI Video



### VRI Speed Control

- Divides your field into a maximum of 180 sectors
- A customized, uploaded VRI prescription speeds up or slows down your center pivot to achieve the desired application depth across each sector
- Available with the Valley Pro2, Select2, or TrackNET products

### VRI QuickStart Prescription

The Valley VRI agronomy team can help take the learning curve out of the equation with a QuickStart prescription specifically for your field. Talk to your local Valley dealer about VRI QuickStart options for Speed Control.

### VRI Zone Control

- Your field can be divided into more than 5,000 zones
- A customized, uploaded VRI prescription pulses sprinkler control valves along the center pivot zones to achieve desired application depth in each zone
- Can control on/off for areas that don't need to be irrigated such as canals, ditches, and wet areas





Correct water application design for your field is crucial to your machine's performance. You can depend on your Valley dealer to ensure you get the proper sprinkler package based on climate, soil type, crops, and topography.

- Precise, computerized sizing and spacing of nozzles ensure application uniformity and efficiency
- Low-pressure sprays operate as low as 6 PSI, saving horsepower, energy, and money
- Application efficiencies can reach 95%
- Additional sprinkler options include end guns, sprinkler drops, boombacks, and part circle sprinklers



Valley

## Preferred Sprinkler Providers

### Valley Sprinklers

The Valley Low-Energy Nozzle (LEN) fixed spray with its drop-in, color-coded nozzle, and Valley All-Range pressure regulator are economical and efficient options for your sprinkler package needs. The desired placement of your sprinklers can be achieved by various Valley applications, which may include drops, boom backs, and other alternatives.



Nelson

### AquaDock Drop Hose Docking Stations

A simple lift-pole allows you to place each sprinkler head on a center pivot docking station easily from the ground. The docking stations hold hoses at elevated positions, and sprinklers stay in the overhead position for better water distribution when irrigating tall crops.

### Nelson Irrigation

Nelson® offers a full line of water application products designed for your specific field conditions and crops that result in higher yields and quality at harvest. Innovation in irrigation by Nelson created Rotator® technology on drops and Big Gun® sprinklers.



Senninger

### Senninger Irrigation

Under the concept of "Low Pressure – High Performance," Senninger® products ensure water is distributed uniformly and with low application intensity. With a variety of designs available, you can select the product best suited to your individual field, crop, and installation needs.

## Updated Sprinkler Package

- The most important investment you can make.
- Exclusive VChart software can design sprinkler packages for all brands of irrigation equipment
- Valley dealers are highly trained experts in water application and conservation
- New, low-pressure sprinkler technology provides efficiency and uniformity, and may reduce energy costs
- Droplet sizes designed for minimum wind drift
- New pressure regulators ensure proper flow from each nozzle



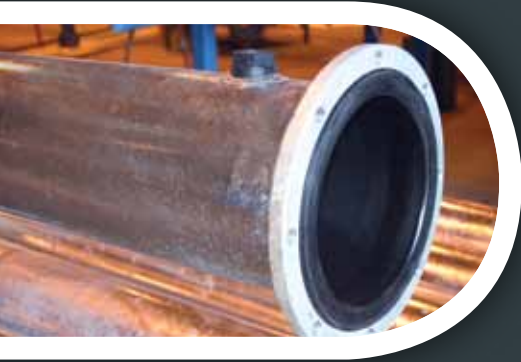
SCAN

this code to learn how to check your end tower pressure for optimal water application

# Corrosion Solutions

SCAN

to learn more  
about PolySpan



## PolySpan®

- Patented design resists effects of acidic, alkaline, corrosive, and saline waters
- Excellent, prorated, 20-year pipeline corrosion warranty with unconditional replacement due to corrosion during the first 10 years
- Manufactured in the USA



## Galvanized Steel

- Extends machine life in a variety of water conditions
- Prorated, 20-year corrosion warranty
- Available for all Valley equipment

## Pipe Options

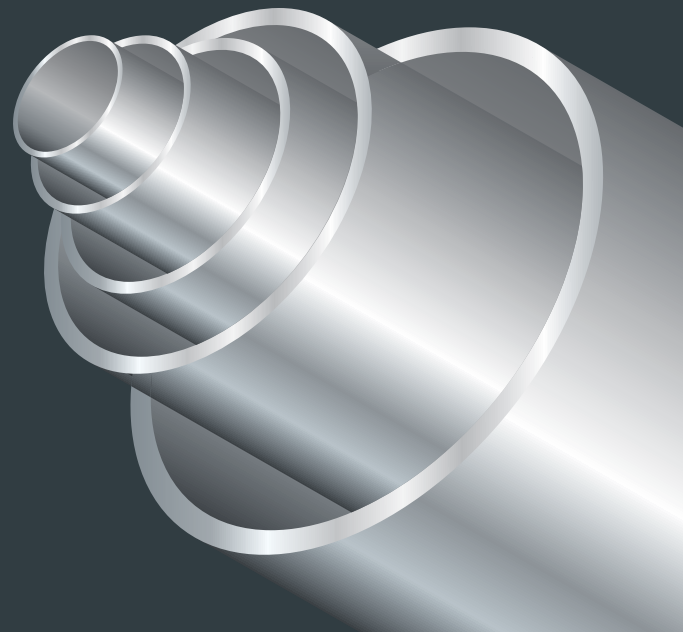
- Choose from 6", 6 5/8", 8 5/8", and 10" pipe diameters to minimize pressure loss and horsepower requirements.
- A 5" pipe option is now available for the 5000 series.

## Re-Piping – A Low-Cost Solution

Re-piping is the most economical way to significantly extend the life of your machine.

### Valley re-piping options:

- PolySpan - for any corrosive water, crop protection, and soil treatment chemicals
- Galvanized Steel - for a variety of water conditions







Valley 3-Wheel Drive



Valley Track Drive



Valley Articulating 4-Wheel Drive

# Floatation Solutions

Stuck pivot towers can cause costly downtime. Valley floatation options can reduce wheel track depth, increase traction, and keep your machines moving through your fields. Different fields require different floatation options, so whether your terrain is rough or your soils are sandy, loamy, or heavy, your Valley dealer can help you determine what's right for you.

### Floatation Options

- Valley 2-Wheel Drive
- Valley 3-Wheel Drive
- Valley Track Drive
- Valley Articulating Track Drive
- Valley Articulating 4-Wheel Drive
- Valley High Profile 3-Wheel Drive Unit

## Valley Wheel Options



### Tire sizes

Choose the tire size that fits your needs:

- 11-22.5 Recap; 11.2-24, 11.2-38, 14.9-24, 16.9-24, and 18.4-26
- 14.9-24, 16.9-24, and 18.4-26 Turf Tires
- 8.4R26 Radial



### 38" Rim Reinforcement

- Heavy-duty rim standard on 38" tires. Valley adds an industry exclusive 0.3" reinforcing plate to the industry's standard rim to ensure long life under extreme field conditions.
- Non-reinforced rim option available on 7000 series only.



### Heavy-Duty Gearbox

Optional bronze gear and hardened steel worm provides longer life under severe field conditions.



## Non-Directional Irrigation Tires

### Firestone Champion Hydro ND

Valley is the only center pivot irrigation company to offer these revolutionary tires. Firestone designed the Champion Hydro ND specifically for irrigation machines to increase traction and lessen rutting. The patented, non-directional tread design has equal traction in forward and reverse directions, so you no longer need a front and rear tire. Available now in 14.9" - 24" and 11.2" - 38" sizes.

# Water Management Solutions



## Valley Water Management

Because irrigation is one of the most important crop inputs, growers are rapidly developing new water sources to meet their irrigation needs. Whether you are building a new reservoir, drawing from a canal, or using well fields to supply your irrigation machines, Valley Water Management and your local dealer can custom design a high-efficiency pumping solution to meet your needs.

### Products:

- Custom-engineered pump stations
- Variable frequency drives to save energy and prolong motor life
- Simple remote control, monitoring, and information management tools
- Soil moisture monitoring systems
- Pump Connect™ wireless pump to pivot connection

### Services:

- Engineering design of hydraulic systems
- Custom control designs

### SCAN

to view a brochure  
about Valley Water  
Management



## Cascade Earth Sciences

Cascade Earth Sciences (CES), a Valley Irrigation company, is an experienced consulting firm that provides comprehensive solutions for waste management and environmental problems. CES is uniquely qualified to develop, design, and implement water management strategies that encompass water and energy efficiency, environmental impact, financial stability, and profitability.

**Water Supply Issues** – well design, aquifer studies, treatment systems, dams, fish screens, and water rights

**Consulting and Design** – engineering, hydrogeology, soils, agronomy, construction management, and contracting

**Data Management** – Water Sentinel® data management software provides detailed reports and analysis for irrigated agriculture (water, climate, soils, crops, etc.)

**Wastewater** – reuse, permitting, monitoring, reporting, and design







## Conversions

### Gearbox and Center Drive Conversion

- Significantly improve reliability and extend the life of your machine
- Minimal investment for maximum improved performance
- 8-year/8000-hour drive train warranty for complete conversions
- Complete and partial conversions available, including oil hydraulic conversions
- Almost all pivot brands can be converted

### Tower Box Conversion

- Substantially reduce electrical shutdowns on older pivots
- High value for a minimal investment
- Proven reliability and durability on non-Valley pivots
- Almost all pivot brands can be converted

## Cable Theft Solutions

### Safeguard Your Investments with CableGuard™

Cable theft on center pivot and linear machines is causing increased concern. In an effort to provide solutions that fit different needs and price points, Valley offers a full line of products designed to deter copper cable theft.

Valley CableGuard™ products include traceable span cable, hardware that makes cable difficult to remove, and monitors that alert you when a theft occurs.

### CableGuard Products

- Proof Positive® Span Cable
- GSM CableGuard Monitor
- Cable Armor
- Motor Lead Armor
- Span Cable Clamp
- Stainless Steel Banding



# Trusted Partner



as well. The Valley dealer network is the most extensive team in the center pivot irrigation industry, which means that wherever you are, there's a Valley dealer for you.

## Fast Service

### Servicing All Brands

Since the mid-1950s, more than 50 irrigation equipment manufacturers have come and gone. But it's no problem if you have an "orphan" machine. Valley dealers are trained to service and install Valley parts on most other pivot brands. Our goal is to keep your equipment moving and doing its job—enabling us to earn your trust and your business, day after day.

### Valley Parts Availability

Valley invests in five factory-owned parts distribution centers to support your needs and provide fast, reliable service. These centers, along with your local dealership's extensive inventory, ensure that you have parts when you need them most.



SCAN

this code to visit our website and learn more about our products

Need a QR code reader? Download one for free from your phone's app marketplace.



See your local authorized Valley dealer for complete details.

Valmont® Irrigation has a policy of continuous product improvement and development. As a result, certain changes in standard equipment, options, price, etc. may have occurred after the publication of this brochure. Some photographs and specifications may not be identical to current production. Your local Valley® dealer is your best source for up-to-date information. Valmont Irrigation reserves the right to change product design and specifications at any time without incurring obligations.

[www.ValleyIrrigation.com](http://www.ValleyIrrigation.com)



©2014 Valmont Industries, Inc., Valley, NE 68064 USA. All rights reserved.

AD10098 C 06/14